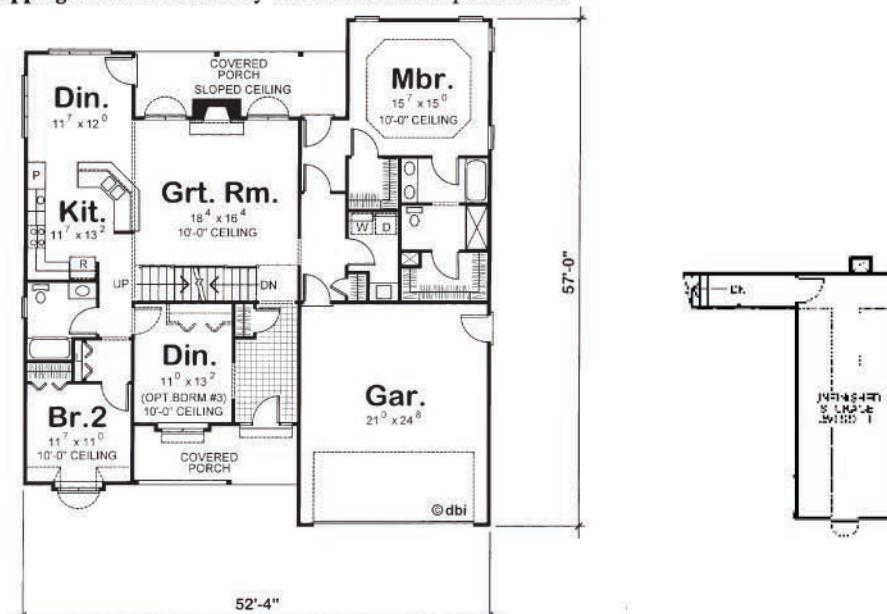


This home may have been altered from the plan's original design.



Universal design ranch is wheelchair accessible
1,875 sq. ft. on main level + 350 sq. ft. unfinished storage
Formal dining room could be converted to third bedroom or den
Large unfinished storage area over the garage
10-foot-high ceiling in master bedroom plus two walk-in closets
Beautiful arched windows in bedroom #2 and great room
Wrapping counter with family-size snack bar in open kitchen



Bring your plans to the store nearest you for a free material take-off and estimate.
For location information, use our store locator at www.carterlumber.com.