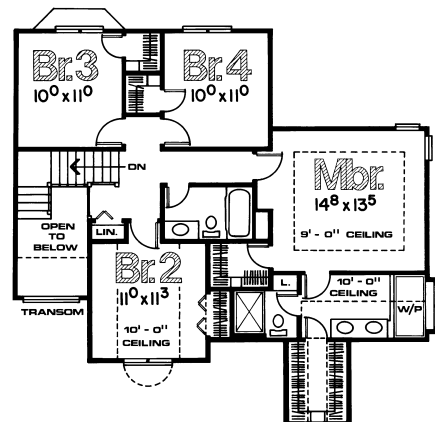
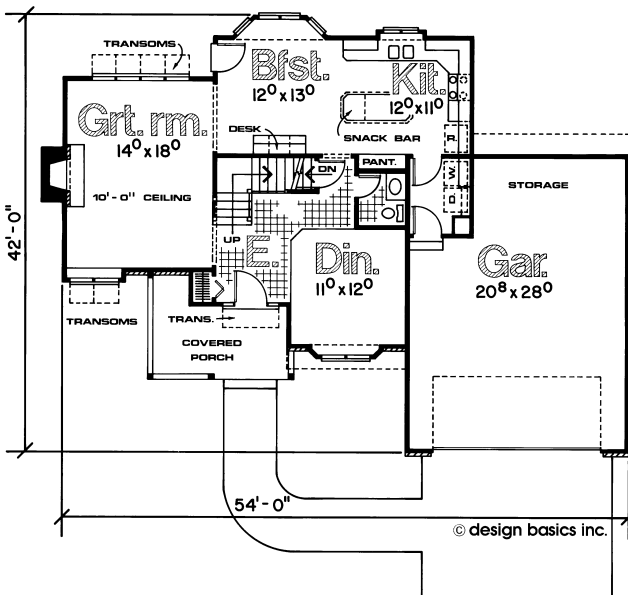


This home may have been altered from the plan's original design.



- Inviting covered porch
- 944 sq. ft. on main level, 987 sq. ft. upstairs
- Interesting staircase with landing in volume entry
- Abundant windows throughout
- 10-foot ceiling and handsome fireplace in great room
- Upstairs landing overlooks entry below
- Master suite features pampering dressing area with double vanity, compartmented toilet and shower plus whirlpool under window



Bring your plans to the store nearest you for a free material take-off and estimate.
 For location information use our store locator at www.carterlumber.com.