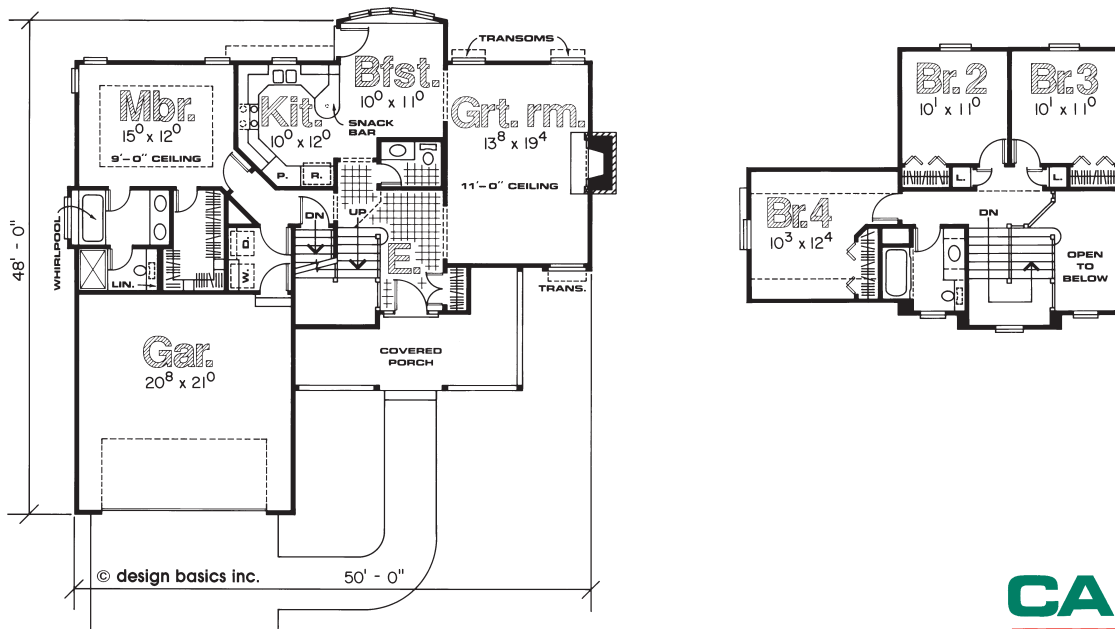


This home may have been altered from the plan's original design.



Exciting curb appeal enhanced by long front porch and gingerbread accents
1,191 sq. ft. on main level, 597 sq. ft. upstairs
Transom windows and 11'-0" ceiling adorn great room
Interesting angles and unique snack bar highlight unforgettable kitchen
Master bedroom has 9'-0" boxed ceiling, large walk-in closet and pampering bath
U-shaped staircase leads to second floor where balcony views entry below
Three secondary bedrooms served by full bath and two hall linen closets



Bring your plans to the store nearest you for a free material take-off and estimate.
For location information use our store locator at www.carterlumber.com.