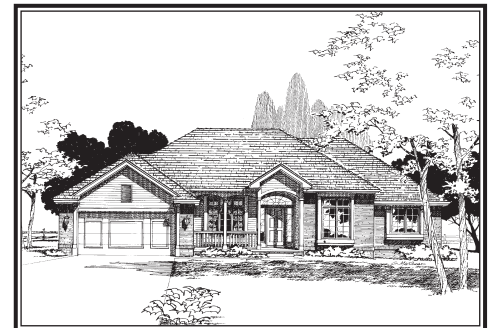
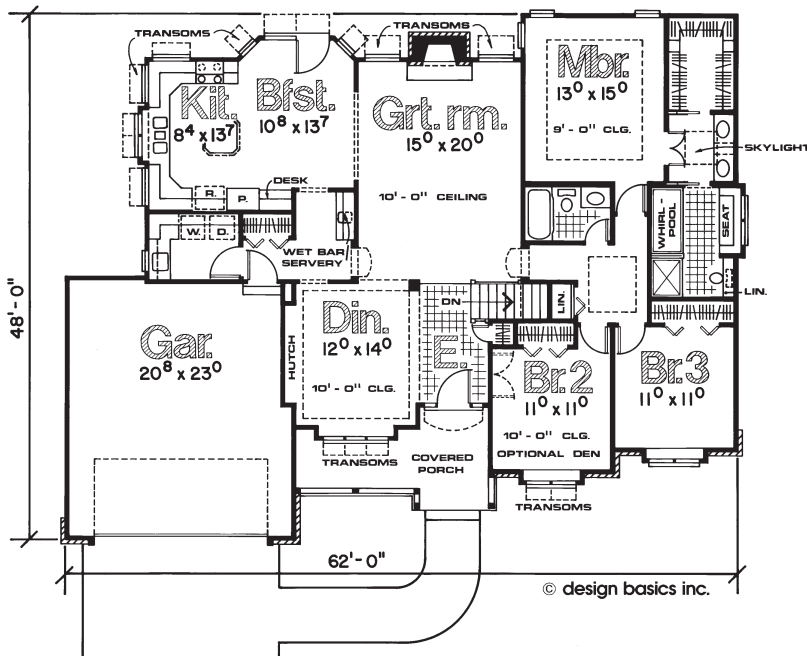


*This home may have been altered from the plan's original design.*



**Appealing roofline** and covered porch with repeating arches  
**Kitchen/dinette area** includes bayed eating area, wrapping counters, desk, island and wet bar/servery for entertaining ease  
**Impactful** 10-foot-high entry  
**Decorative hutch space** in dining room

**Windows frame fireplace** in great room  
**Laundry/mud room** with sink and extra counter space  
**Bedroom #2** can be utilized as an optional den  
**Master suite** enjoys decorative boxed ceiling and elegant windows to the rear, dual lavs, walk-in closet, whirlpool and cedar-lined window seat for storage



Bring your plans to the store nearest you for a free material take-off and estimate.  
 For location information use our store locator at [www.carterlumber.com](http://www.carterlumber.com).