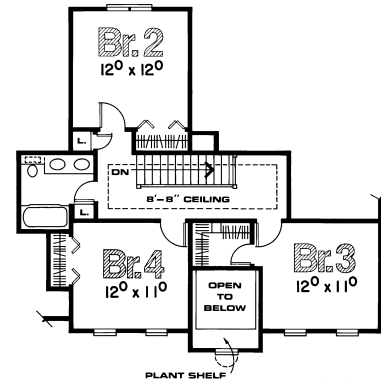
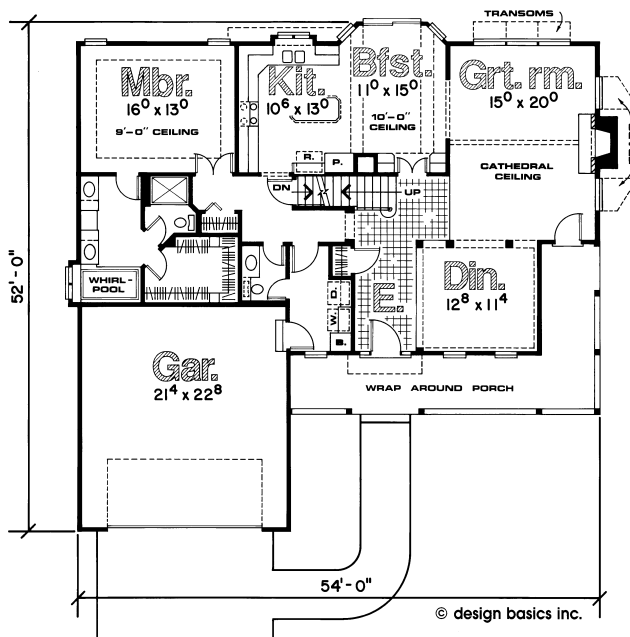


This home may have been altered from the plan's original design.



- Wrap-around covered porch** and windows create striking front elevation
- 1,570 sq. ft. on main level, 707 sq. ft. upstairs**
- Entry** offers tremendous open view of dining and great room
- Fireplace** centers on cathedral ceiling which soars to over 16 feet high in great room
- Broom closet** in laundry room which also serves as mud entry from outside
- Master bath** has large whirlpool, dual lavs, makeup vanity and walk-in closet
- Kitchen features** such amenities as lazy Susan, large food preparation island and ample pantry



© design basics inc.