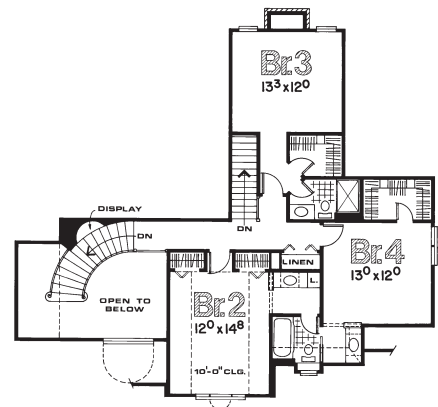
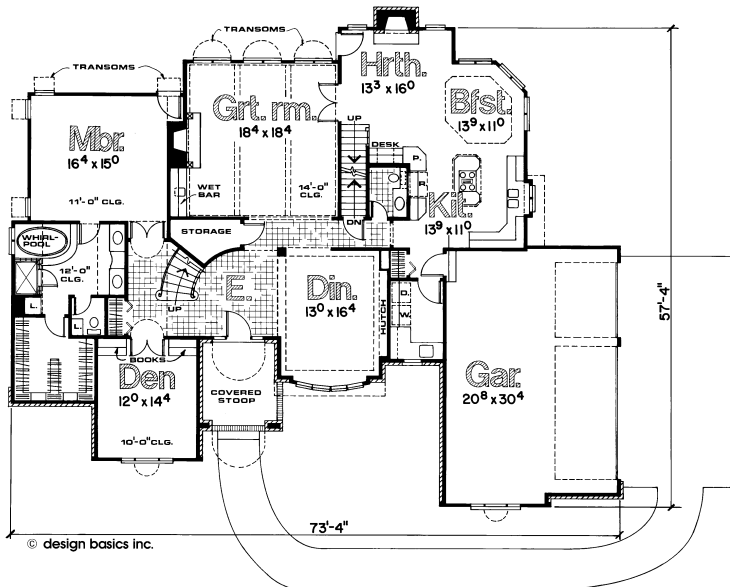


*This home may have been altered from the plan's original design.*



- Spacious formal entry with spectacular curving staircase
- 2,252 sq. ft. on main level, 920 sq. ft. upstairs
- Repeating arched windows out the back of the large great room
- 9-foot-high main level walls
- Second fireplace in hearth room open to dinette/kitchen area
- Arched transom above double doors into volume den with built-in bookcases and arched window
- Master bedroom retreat with private back door and luxurious dressing area featuring oval whirlpool and large walk-in closet



© design basics inc.